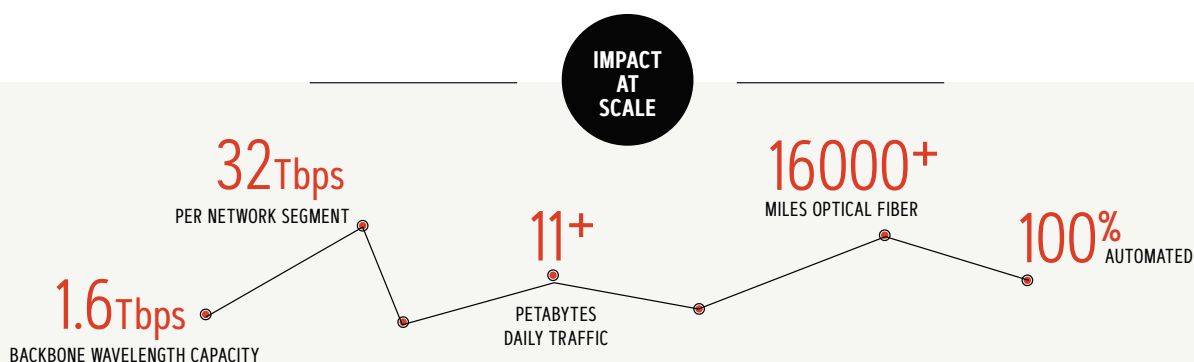




## Delivering Strategic Value to the Federal Government

Internet2 delivers highly available, resilient, secure, ultra-high-speed global **network capabilities**, **cloud solutions**, and **advanced services** that enable the diverse missions of federal government agencies. Whether through technical partnership and access to Internet2's hyperscale network with agencies like DOE and NASA, or supporting mission-focused custom networks for agencies including NOAA, NIH, USDA, and FDA, Internet2's infrastructure and services are designed to meet the rigorous requirements of mission-critical operations across the federal government.



- 1.6 Tbps of provisioned backbone wavelength capacity, supporting data-intensive science and operations
- 32 Tbps per network segment of additional capacity for seamless, rapid network scalability
- 11+ petabytes of daily traffic, supporting big data exchanges
- 16,000+ miles of optical fiber, connecting federal labs, data centers, and universities
- 100% automated, enabling rapid and reliable provisioning, self-provisioning, and network configuration

### Infrastructure Built for Mission Success

Internet2 works closely with federal agencies to design and deploy custom, private, and globally connected data communication networks tailored to mission needs. By leveraging Internet2's robust platform, advanced security capabilities, and scalable solutions, government agencies can create infrastructure that supports rapid growth, seamless connectivity, and secure data exchange across regions.

### Trusted By Federal Leaders in Science and Technology

Internet2's 500+ member community includes 60 federal and affiliate organizations. Among them are key entities in DOE, NASA, NIH, NIST, NOAA, NSF, and USGS.

**Explore the  
Internet2 Network**

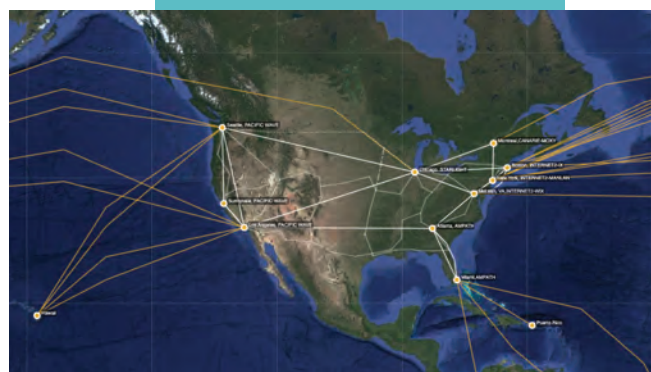
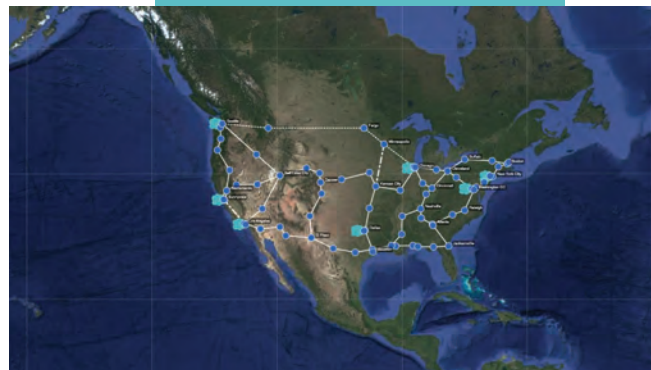
[internet2.edu/network](https://internet2.edu/network)

## Internet2, Exceptional by Design

Internet2 is a 501(c)(3) nonprofit and is the only AI-ready hyperscale national network whose mission is to advance science, research, and education in the U.S. Internet2's infrastructure and services are purpose-built to deliver the performance, security, and scalability required to support these missions.

### Key Differentiators

- **Unmatched Visibility** – Architectural transparency that enhances operational stability
- **Architectural Control** – Full visibility and flexibility to customize networks to mission-specific requirements
- **Abundant Bandwidth** – Capacity, scalability, and capabilities beyond commercial offerings
- **Cost Efficiency** – Member- and mission-driven capabilities yield the best value for government
- **Insight Console** – Custom-built to visualize, manage, and troubleshoot services
- **Global Collaboration** – Access to a community of science, research, and engineering expertise
- **Partnership Model** – Ability to selectively leverage services to build private or shared infrastructure



## Service Highlights

### Layer 1 Service

Build high-capacity, custom, and cost-effective networks with 10 to 800G point-to-point links and flexible grid spectrum.

### Layer 2 Service

Gain a strategic advantage with secure, scalable, and flexible 10 to 400G Ethernet connectivity.

### Cloud Connect

Establish direct, dedicated connections to Amazon Web Services, Google Cloud, Microsoft Azure, and Oracle Cloud Infrastructure.

### DDoS Mitigation

Protect mission-critical systems from distributed denial-of-service attacks with a cloud-based, volumetric solution.

### InCommon

Empower secure, scalable inter-organizational collaboration globally with tailored identity and access management solutions and a global Wi-Fi roaming access service through eduroam.

**Discover more**  
**Internet2 Services**

**[internet2.edu/services](https://internet2.edu/services)**